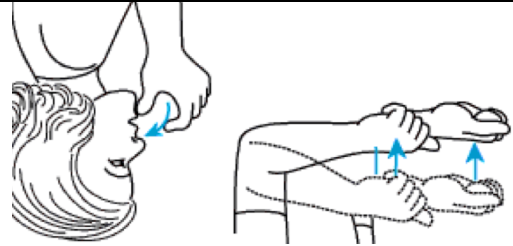


-ABLE (can, is possible)

drinkable

able to drink

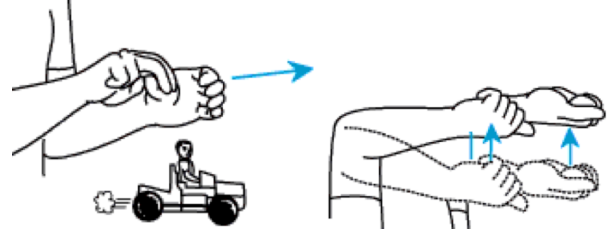


drink + able

Thumb of C-hand on chin, drink from C, and Palm-down A's drop slightly.

rideable

able to ride



ride + able

First two fingers of right hand sit on thumb of horizontal palm-right C-hand; both move forward, and Palm-down A's drop slightly.

eatable

able to eat



eat + able

Thumb of extended-A circles in and up near mouth spooning food in, and Palm-down A's drop slightly.

taxable

able to tax



tax + able

Thumb of right T strikes straight down left palm, and Palm-down A's drop slightly.

bearable

able to bear (handle)



bear + able

Swing crossed wrists of palm-in claw hands to the right, still crossed, and Palm-down A's drop slightly.

-ABLE (can, is possible)

makeable

able to make

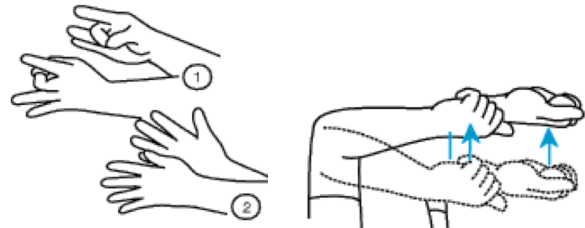


make + able

Side of S touches on side of S; lift off, both twist to palm-in and touch again, and Palm-down A's drop slightly.

hateable

able to hate



hate + able

Parallel 8's snap open to 5's and Palm-down A's drop slightly.

erasable

able to erase

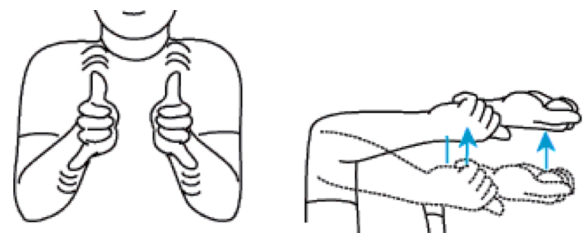


erase + able

Bottom of right E rubs back and forth on left palm, and Palm-down A's drop slightly.

playable

able to play

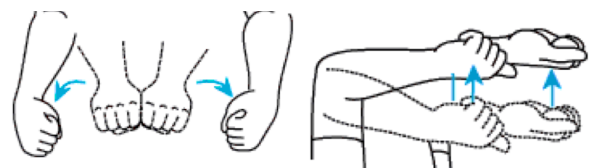


play + able

Y-hands face each other; shake, and Palm-down A's drop slightly.

breakable

able to break



break + able

Sides of S-hands touch, then separate sharply, twisting to face each other, and Palm-down A's drop slightly.